



# Roberts Lab\_2011-05-23 13-37-18\_CC009827.pcrd

5/23/2011 3:55 PM

## Report Information

User: BioRad/Roberts Lab  
Data File Name: Roberts Lab\_2011-05-23 13-37-18\_CC009827.pcrd  
Data File Path: C:\Users\srlab\Documents\My Dropbox\Roberts Lab CFX96 Data (7)\Sam  
Well Group Name: All Wells  
Report Differs from Last Save: No

## Run Setup

### Run Information

Run User: Roberts Lab  
Run Date: 5/23/2011 1:37 PM  
ID:  
Notes:  
Sample Volume: 20  
Temperature Control Mode: Calculated  
Lid Temperature: 105  
Base Serial Number: CC009827  
Optical Head Serial Number: 785BR3659

### Protocol

- 1: 98.0°C for 2:00
- 2: 98.0°C for 0:02
- 3: 55.0°C for 0:05  
Plate Read
- 4: GOTO 2, 39 more times
- 5: Melt Curve 75.0°C to 95.0°C : Increment 0.2°C 0:10  
Plate Read

### Plate Display

	1	2	3	4	5	6	7	8	9	10	11	12
A	Unk 1039	NTC 1039	Unk 8423	NTC 8423	Unk 4706	NTC 4706	Unk 8213	NTC 8213	Unk 2002	NTC 2002		
B	Unk 7676	NTC 7676	Unk 6941	Unk 6941	Unk 2494	Unk 2494	Unk 6093	NTC 6093	Unk 4839	NTC 4839		
C	Unk 8163	NTC 8163	Unk 7486	NTC 7486	Unk 2830	NTC 2830	Unk 2039	NTC 2039	Unk 6312	NTC 6312		
D	Unk 477	NTC 477	Unk 2084	NTC 2084	Unk 1081	NTC 1081	Unk 36	NTC 36	Unk 3978	NTC 3978		
E	Unk 1761	NTC 1761	Unk 7234	NTC 7234	Unk 5170	NTC 5170	Unk 4459	NTC 4459	Unk 6038	NTC 6038		
F	Unk 7333	NTC 7333	Unk 2081	NTC 2081	Unk 1521	NTC 1521	Unk 5635	NTC 5635	Unk 6359	NTC 6359		

	1	2	3	4	5	6	7	8	9	10	11	12
G	Unk 2056	NTC 2056	Unk 1690	NTC 1690	Unk 2652	NTC 2652	Unk 5363	NTC 5363	Unk 6364	NTC 6364		
H	Unk 137	NTC 137	Unk 6394	NTC 6394	Unk 4744	NTC 4744	Unk 927	NTC 927	Unk 6910	NTC 6910		

## Quantification

Step #: 3

Analysis Mode: Fluorophore

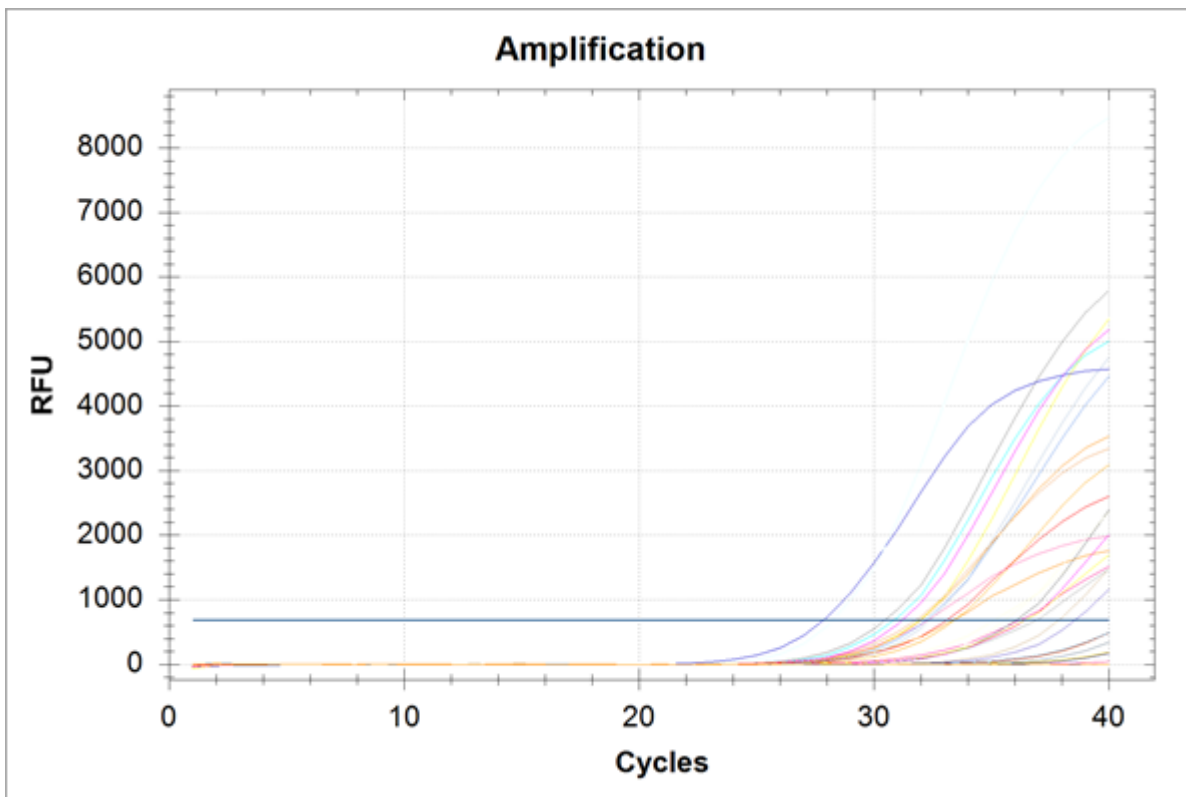
Cq Determination: Single Threshold

Baseline Method:

FAM: Auto Calculated

Threshold Setting:

FAM: 685.39, Auto Calculated



## Quantification Data

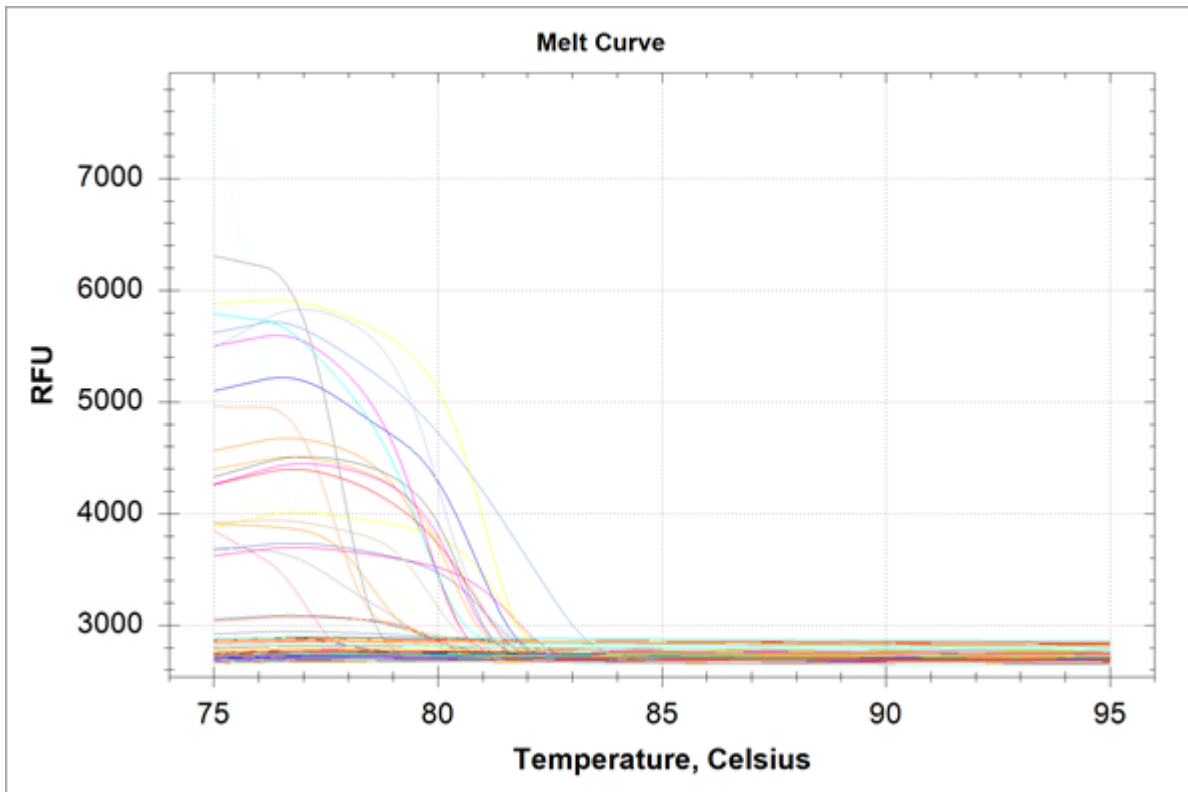
Well	Fluor	Target	Content	Sample	Cq	Cq Mean	Cq Std. Dev
A01	FAM	1039	Unkn		31.94	31.94	0.000
A02	FAM	1039	NTC		N/A	0.00	0.000
A03	FAM	8423	Unkn		37.86	37.86	0.000
A04	FAM	8423	NTC		N/A	0.00	0.000
A05	FAM	4706	Unkn		N/A	0.00	0.000
A06	FAM	4706	NTC		N/A	0.00	0.000
A07	FAM	8213	Unkn		N/A	0.00	0.000
A08	FAM	8213	NTC		N/A	0.00	0.000
A09	FAM	2002	Unkn		N/A	0.00	0.000
A10	FAM	2002	NTC		N/A	0.00	0.000
B01	FAM	7676	Unkn		35.12	35.12	0.000

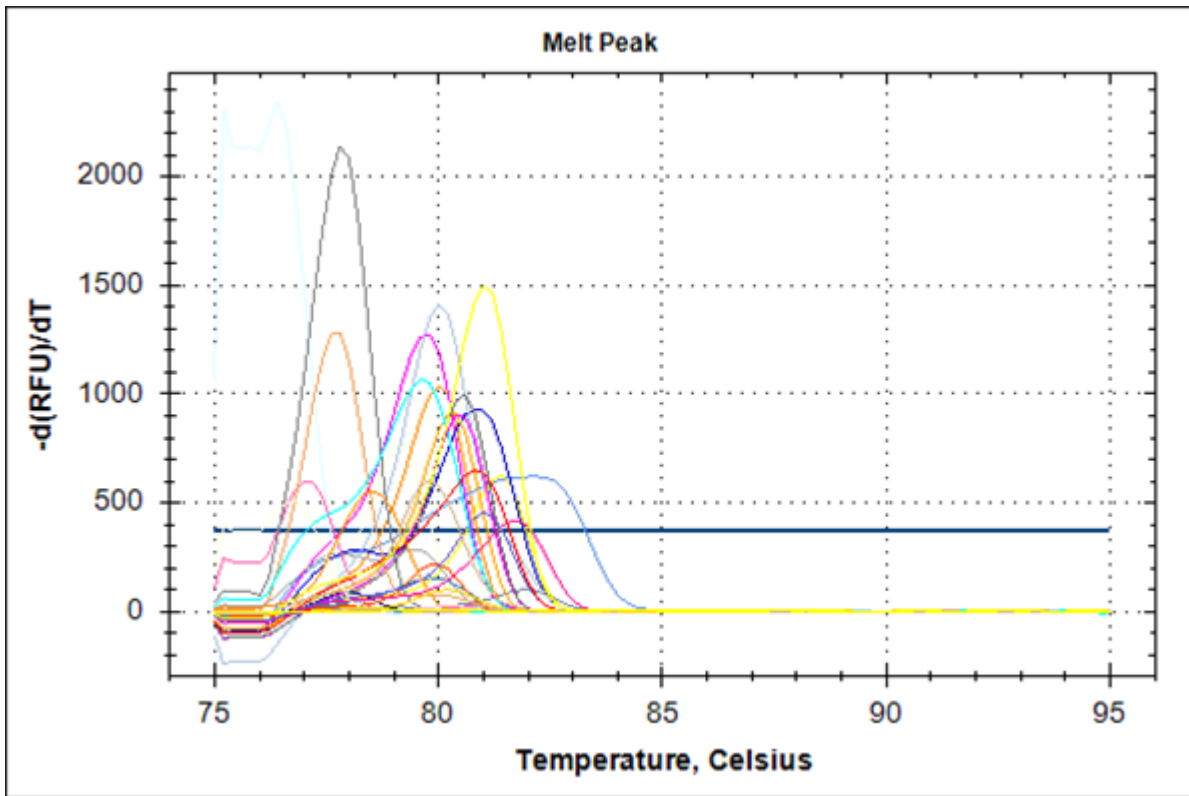
Well	Fluor	Target	Content	Sample	Cq	Cq Mean	Cq Std. Dev
B02	FAM	7676	NTC		N/A	0.00	0.000
B03	FAM	6941	Unkn		N/A	0.00	0.000
B04	FAM	6941	Unkn		N/A	0.00	0.000
B05	FAM	2494	Unkn		N/A	0.00	0.000
B06	FAM	2494	Unkn		N/A	0.00	0.000
B07	FAM	6093	Unkn		N/A	0.00	0.000
B08	FAM	6093	NTC		N/A	0.00	0.000
B09	FAM	4839	Unkn		33.09	33.09	0.000
B10	FAM	4839	NTC		N/A	0.00	0.000
C01	FAM	8163	Unkn		30.85	30.85	0.000
C02	FAM	8163	NTC		N/A	0.00	0.000
C03	FAM	7486	Unkn		33.37	33.37	0.000
C04	FAM	7486	NTC		N/A	0.00	0.000
C05	FAM	2830	Unkn		34.64	34.64	0.000
C06	FAM	2830	NTC		N/A	0.00	0.000
C07	FAM	2039	Unkn		38.54	38.54	0.000
C08	FAM	2039	NTC		N/A	0.00	0.000
C09	FAM	6312	Unkn		36.21	36.21	0.000
C10	FAM	6312	NTC		N/A	0.00	0.000
D01	FAM	477	Unkn		N/A	0.00	0.000
D02	FAM	477	NTC		N/A	0.00	0.000
D03	FAM	2084	Unkn		31.77	31.77	0.000
D04	FAM	2084	NTC		N/A	0.00	0.000
D05	FAM	1081	Unkn		36.04	36.04	0.000
D06	FAM	1081	NTC		N/A	0.00	0.000
D07	FAM	36	Unkn		30.45	30.45	0.000
D08	FAM	36	NTC		N/A	0.00	0.000
D09	FAM	3978	Unkn		36.44	36.44	0.000
D10	FAM	3978	NTC		N/A	0.00	0.000
E01	FAM	1761	Unkn		N/A	0.00	0.000
E02	FAM	1761	NTC		N/A	0.00	0.000
E03	FAM	7234	Unkn		33.41	33.41	0.000
E04	FAM	7234	NTC		N/A	0.00	0.000
E05	FAM	5170	Unkn		N/A	0.00	0.000
E06	FAM	5170	NTC		N/A	0.00	0.000
E07	FAM	4459	Unkn		32.36	32.36	0.000
E08	FAM	4459	NTC		N/A	0.00	0.000
E09	FAM	6038	Unkn		32.29	32.29	0.000
E10	FAM	6038	NTC		N/A	0.00	0.000
F01	FAM	7333	Unkn		N/A	0.00	0.000
F02	FAM	7333	NTC		N/A	0.00	0.000
F03	FAM	2081	Unkn		27.85	27.85	0.000
F04	FAM	2081	NTC		N/A	0.00	0.000
F05	FAM	1521	Unkn		28.23	28.23	0.000
F06	FAM	1521	NTC		N/A	0.00	0.000
F07	FAM	5635	Unkn		36.93	36.93	0.000
F08	FAM	5635	NTC		N/A	0.00	0.000
F09	FAM	6359	Unkn		N/A	0.00	0.000
F10	FAM	6359	NTC		N/A	0.00	0.000

Well	Fluor	Target	Content	Sample	Cq	Cq Mean	Cq Std. Dev
G01	FAM	2056	Unkn		31.20	31.20	0.000
G02	FAM	2056	NTC		N/A	0.00	0.000
G03	FAM	1690	Unkn		N/A	0.00	0.000
G04	FAM	1690	NTC		N/A	0.00	0.000
G05	FAM	2652	Unkn		N/A	0.00	0.000
G06	FAM	2652	NTC		N/A	0.00	0.000
G07	FAM	5363	Unkn		36.43	36.43	0.000
G08	FAM	5363	NTC		N/A	0.00	0.000
G09	FAM	6364	Unkn		N/A	0.00	0.000
G10	FAM	6364	NTC		N/A	0.00	0.000
H01	FAM	137	Unkn		N/A	0.00	0.000
H02	FAM	137	NTC		N/A	0.00	0.000
H03	FAM	6394	Unkn		32.20	32.20	0.000
H04	FAM	6394	NTC		N/A	0.00	0.000
H05	FAM	4744	Unkn		N/A	0.00	0.000
H06	FAM	4744	NTC		N/A	0.00	0.000
H07	FAM	927	Unkn		35.55	35.55	0.000
H08	FAM	927	NTC		N/A	0.00	0.000
H09	FAM	6910	Unkn		32.01	32.01	0.000
H10	FAM	6910	NTC		N/A	0.00	0.000

## Melt Curve

Step #: 5





## Melt Curve Data

Well	Fluor	Target	Content	Sample	Melt Temp
A01	FAM	1039	Unkn		81.00
A02	FAM	1039	NTC		None
A03	FAM	8423	Unkn		79.80
A04	FAM	8423	NTC		None
A05	FAM	4706	Unkn		None
A06	FAM	4706	NTC		None
A07	FAM	8213	Unkn		None
A08	FAM	8213	NTC		None
A09	FAM	2002	Unkn		None
A10	FAM	2002	NTC		None
B01	FAM	7676	Unkn		76.80
B02	FAM	7676	NTC		None
B03	FAM	6941	Unkn		None
B04	FAM	6941	Unkn		None
B05	FAM	2494	Unkn		None
B06	FAM	2494	Unkn		None
B07	FAM	6093	Unkn		None
B08	FAM	6093	NTC		None
B09	FAM	4839	Unkn		80.80
B10	FAM	4839	NTC		None
C01	FAM	8163	Unkn		79.60
C02	FAM	8163	NTC		None
C03	FAM	7486	Unkn		78.40
C04	FAM	7486	NTC		None
C05	FAM	2830	Unkn		79.80
C06	FAM	2830	NTC		None
C07	FAM	2039	Unkn		81.00
C08	FAM	2039	NTC		None
C09	FAM	6312	Unkn		81.80
C10	FAM	6312	NTC		None
D01	FAM	477	Unkn		None
D02	FAM	477	NTC		None
D03	FAM	2084	Unkn		77.80
D04	FAM	2084	NTC		None
D05	FAM	1081	Unkn		80.60
D06	FAM	1081	NTC		None
D07	FAM	36	Unkn		77.80
D08	FAM	36	NTC		None
D09	FAM	3978	Unkn		80.40
D10	FAM	3978	NTC		None
E01	FAM	1761	Unkn		None
E02	FAM	1761	NTC		None
E03	FAM	7234	Unkn		80.40
E04	FAM	7234	NTC		None
E05	FAM	5170	Unkn		None
E06	FAM	5170	NTC		None
E07	FAM	4459	Unkn		80.00
E08	FAM	4459	NTC		None

Well	Fluor	Target	Content	Sample	Melt Temp
E09	FAM	6038	Unkn		77.00
E10	FAM	6038	NTC		None
F01	FAM	7333	Unkn		None
F02	FAM	7333	NTC		None
F03	FAM	2081	Unkn		80.80
F04	FAM	2081	NTC		None
F05	FAM	1521	Unkn		76.40
F06	FAM	1521	NTC		None
F07	FAM	5635	Unkn		None
F08	FAM	5635	NTC		None
F09	FAM	6359	Unkn		None
F10	FAM	6359	NTC		None
G01	FAM	2056	Unkn		79.80
G02	FAM	2056	NTC		None
G03	FAM	1690	Unkn		None
G04	FAM	1690	NTC		None
G05	FAM	2652	Unkn		None
G06	FAM	2652	NTC		None
G07	FAM	5363	Unkn		81.40
G08	FAM	5363	NTC		None
G09	FAM	6364	Unkn		None
G10	FAM	6364	NTC		None
H01	FAM	137	Unkn		None
H02	FAM	137	NTC		None
H03	FAM	6394	Unkn		82.20
H04	FAM	6394	NTC		None
H05	FAM	4744	Unkn		None
H06	FAM	4744	NTC		None
H07	FAM	927	Unkn		79.20
H08	FAM	927	NTC		None
H09	FAM	6910	Unkn		80.00
H10	FAM	6910	NTC		None

## QC Parameters

Description	Value	Use	Results	Exclude Wells	All excluded wells
Negative control with a Cq less than	38	True		False	
NTC with a Cq less than	38	True		False	
NRT with a Cq less than	38	True		False	
Positive control with a Cq greater than	30	True		False	
Unknown without a Cq	N/A	True	FAM:A5, A7, A9, B3, B4, B5, B6, B7, D1, E1, E5, F1, F9, G3, G5, G9, H1, H5.	False	
Standard without a Cq	N/A	True		False	
Efficiency greater than	110.0	True			
Efficiency less than	90.0	True			
Std Curve R <sup>2</sup> less than	0.980	True			
Replicate group Cq Std Dev greater than	0.20	True		False	